

Mitchell Estimating

with Toyota Recommended Repair Procedures

EFFICIENT ESTIMATING

Mitchell Estimating, also known as UltraMate, now provides Toyota Recommended Repair Procedures **free of charge to subscribers**. This value add easily connects collision repair shops with direct access to the content needed to restore Toyota vehicles to pre-accident condition. By improving the flow of information, Toyota Recommended Repair Procedures could reduce the cycle time on Toyota claims for both the body shop and insurance carrier.

SIMPLIFY THE ESTIMATING PROCESS

Forget the days of starting with a blank estimate and manually adding in parts and materials as you go. Now you have the option to start with a preconfigured list of all the parts and labor and service information related to most Toyota repairs up front. Reduce manual entry and referencing multiple sources—it's as simple as that!

WHAT DOES TOYOTA RECOMMENDED REPAIR PROCEDURES CONSIST OF?

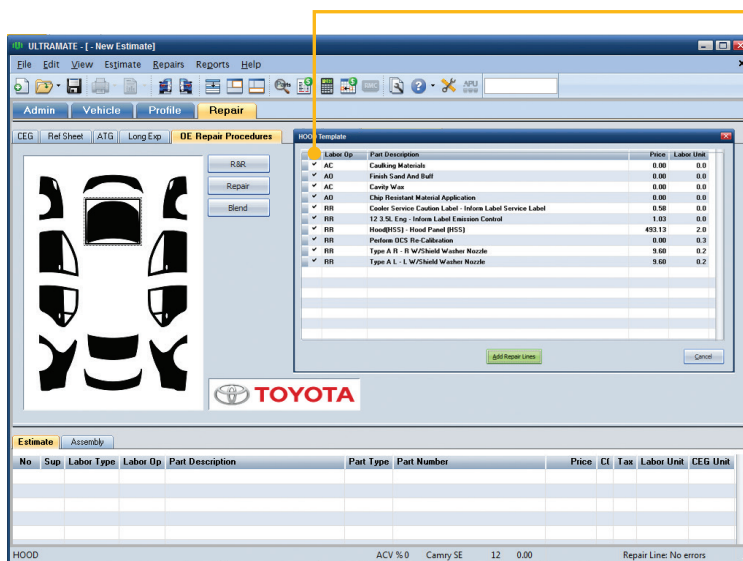
- Direct access to Toyota repair information (including CRIB and Service Bulletins) during the estimate
- A preconfigured list of related parts, labor and operations as well as links to all relevant service and repair information is provided by Toyota—allowing the end user to keep or omit information depending on the repair
- Mitchell-authored Estimate Notes
- Access to comprehensive data, with repair procedures for most Toyota and Scion vehicles

KEY FEATURES & BENEFITS:

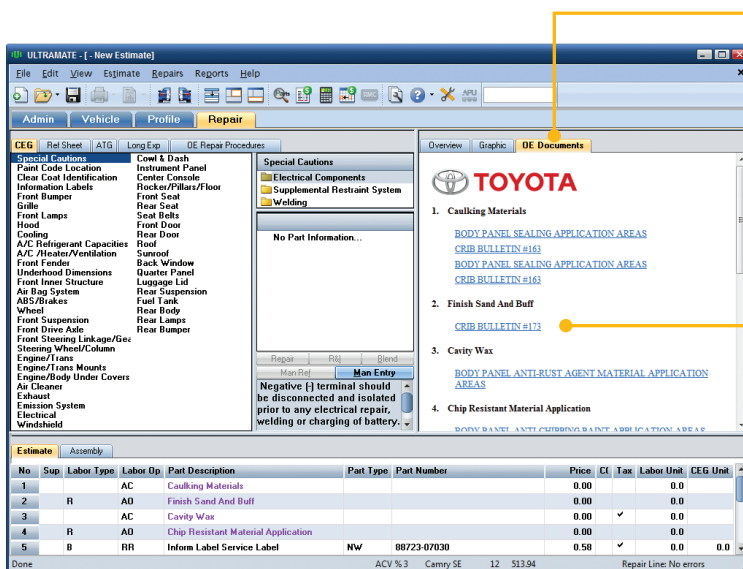
FEATURES	BENEFITS
Instant Access to Toyota's Technical Information System (TIS)	Ensures technicians have access to Toyota's TIS, CRIB and Service Bulletins eliminating the need for multiple sources.
Preconfigured lists of Toyota parts, labor and operations needed for a repair	Reduce manual entry, saving time over traditional methods. Consistent result regardless of who generates the estimate.

IT'S FAST AND EASY!

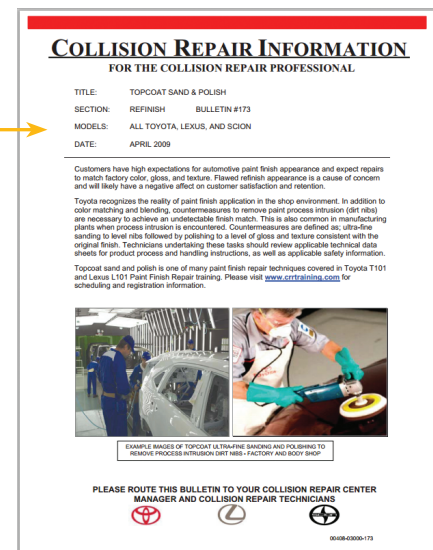
Within the Repair tab, simply click on the OE Repair Procedures button and you are well on your way to quickly accessing the information needed to complete your Toyota repair.



Add the parts that you want, omit the ones that do not apply.



When you click on the OE documents tab, you will have access to Service and CRIB Bulletins directly from Toyota's Technical Information System.



mitchell

Mitchell International, Inc.
6220 Greenwich Drive
San Diego, California 92122
866.639.0899
www.mitchell.com

For details or to order Mitchell Estimating call
1-866-639-0899 or visit mitchell.com/toyota